

Eduroam at Royal Academy of Art

Version: 0.1

Date: 11-2-2015

Owner: IT KABK.

Contact: systeembeheer@kabk.nl

Connecting wireless to the 'eduroam' network on Windows 7

Before you begin

The following instruction is supported by the KABK and has been tested to be working. However, we offer this manual to you as an extra service. If you have a windows version older than Windows 7 we strongly advise you to install a newer version of windows due to Microsoft support discontinuity for versions older than Windows 7.

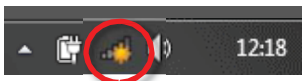
Prerequisites

In order to make a successful connection, make sure that all your wireless hardware is installed, switched on and managed by Windows and that you have the latest updates for Windows installed.

Wireless profile installation

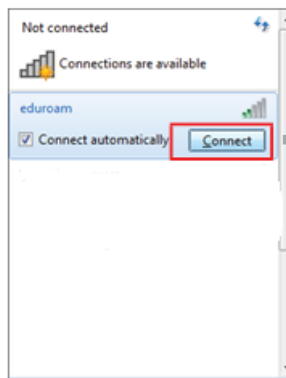
Step 1

Click the **wireless network icon** in your system tray.
A window will pop-up showing the networks that are currently available.



Step 2

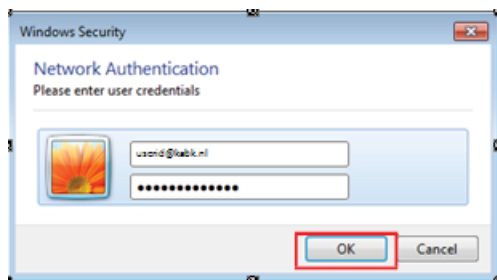
Click on **eduroam**. Then click **Connect**.
An authentication dialog will appear.



Step 3

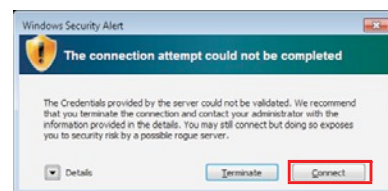
For both students and employees, enter your userid@kabk.nl or usrid@student.kabk.nl and your **password**

Click OK. A certificate dialog will appear.



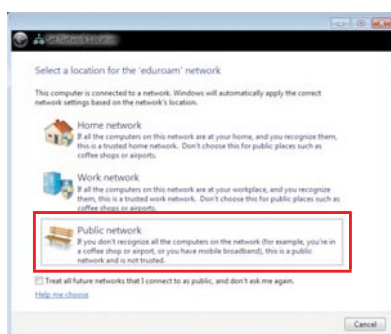
Step 4

Windows will probably warn you to accept the security certificates. Click on **Connect**.



Step 5

You'll probably be prompted to set a location for this network. **Public network** is recommended.



Step 6

You are now connected to the eduroam network!

