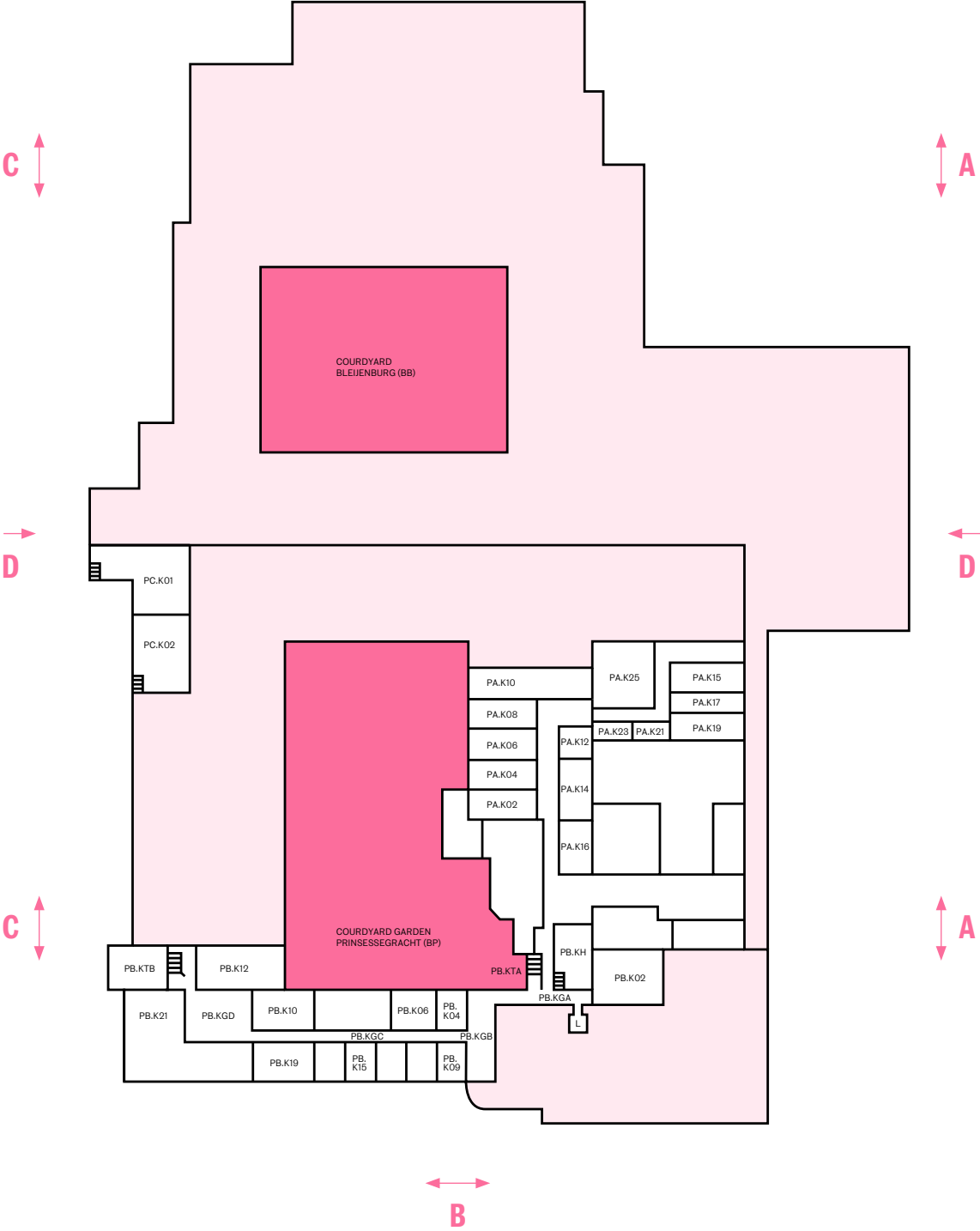


Floorplan basement

Prinsessegracht Building

- PA.K02** Storage: Student Projects
- PA.K04** Storage: Student Projects
- PA.K06** Storage: Student Projects
- PA.K08** Storage: Student Projects
- PA.K10** Storage: Student Projects
- PA.K12** Storage: Student Projects
- PA.K14** Storage: Student Projects
- PA.K15** Storage: Student Projects
- PA.K16** Storage: Student Projects
- PA.K17** Storage: Student Projects
- PA.K19** Storage: Student Projects
- PA.K21** Storage: Student Projects
- PA.K23** Storage: Student Projects
- PA.K25** Storage: Student Projects
- PB.K02** Spray Booth
- PB.K06** Facility Services Office
- PB.K10** Storage Facility
- PB.K12** Storage: Print Work
- PB.K15** Tufting Room
- PB.K21** Academy Shop the Hague
- PC.K01** Storage: Wood Workshop
- PC.K02** Wood Workshop



Floorplan basement

Floorplan basement

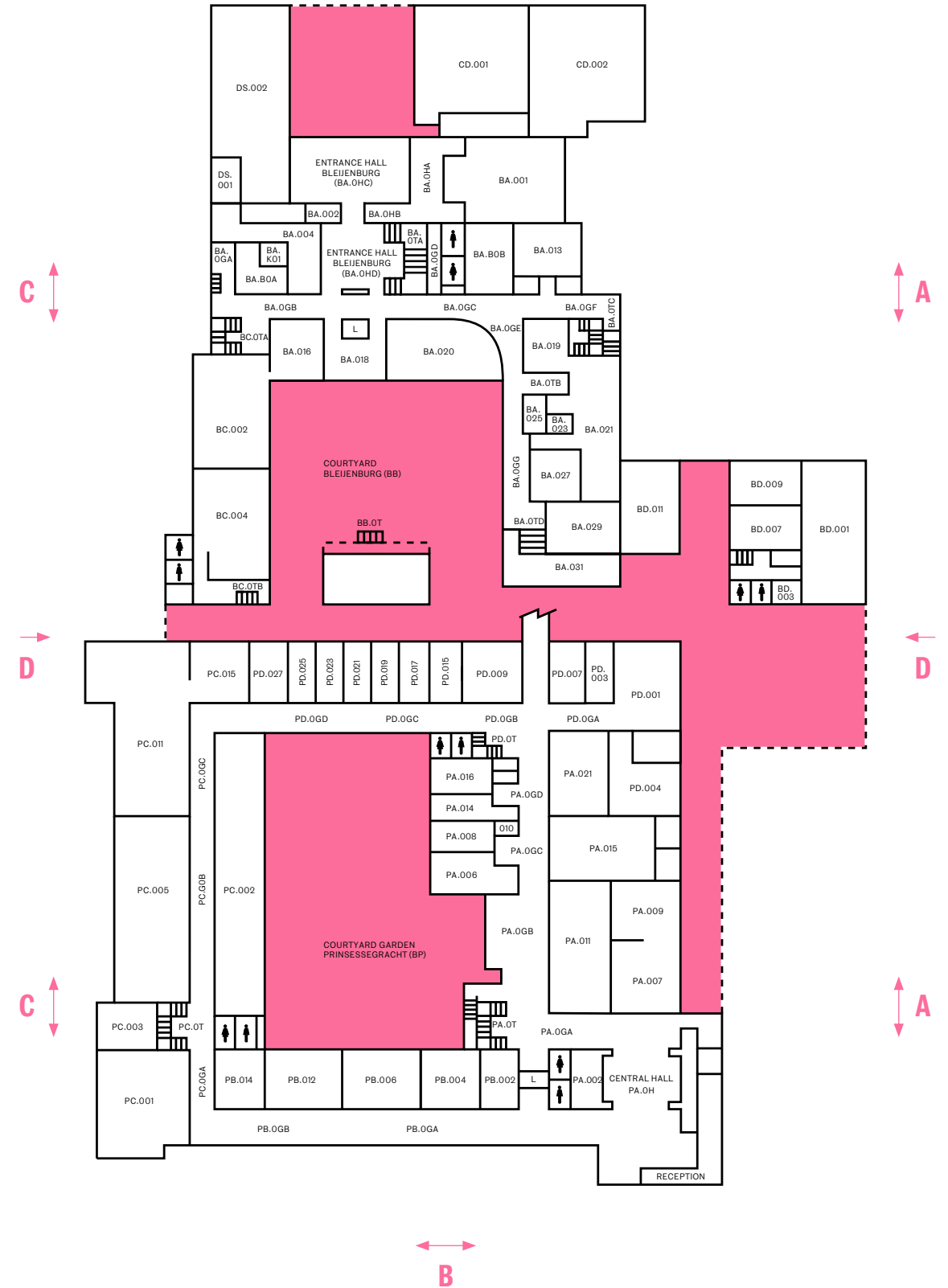
Floorplan ground floor

Prinsessegracht Building

- PA.001** Reception
- PA.002** Rental
- PA.006** Director's Office
- PA.007** KABK Gallery 1
- PA.008** Office Executive secretary & Head of Operations
- PA.009** KABK Gallery 2
- PA.010** Printing Room Office
- PA.011** KABK Gallery 3
- PA.014** Marketing & Communications (Head)
- PA.015** Library
- PA.016** Marketing & Communication
- PA.021** Gipsenzaal
- PB.002** Textile & Fashion Classroom
- PB.004** Textile & Fashion Classroom
- PB.006** Textile & Fashion Worksites
- PB.012** Textile Workshop (Sewing)
- PB.014** Textile & Fashion Workshop
- PC.001** Practical Classroom: 2D Techniques
- PC.002** Textile & Fashion Classroom
- PC.003** ColorLab
- PC.005** Metal Workshop
- PC.011** Wood workshop
- PC.015** Wood workshop
- PD.001** Computer workshop
- PD.004** Computer classroom
- PD.007** Office Textile & Fashion
- PD.009** Student administration
- PD.015** Financial administration
- PD.017** Office Fine Arts
- PD.019** Office IST
- PD.021** Office Preparatory Courses
- PD.023** Office International & Exchange
- PD.025** Office Quality Assurance
- PD.027** Office Facilities

Bleijenburg Building

- BA.001** Auditorium
- BA.002** Office Type & Media
- BA.004** Type & Media Classroom
- BA.013** Theory Classroom
- BA.016** Master Industrial Design Classroom
- BA.018** Exhibition Space
- BA.019** Lithography Workshop: graining table/stone storage
- BA.020** Practical Classroom: 2D techniques
- BA.021** Graphics Workshop: Lithography
- BA.023** Graphics Workshop: Resin / Charcoal Room
- BA.025** Graphic Workshop: Acid Room
- BA.027** 3D Workshop
- BA.029** Photography Workshop: Refined Techniques
- BA.031** Graphics Workshop: Typesetting
- BA.K01** Fine Arts Worksites
- BC.001** Workspace Catering Staff
- BC.002** Fine Arts Worksites
- BC.004** Fine Arts Worksites
- BD.001** Clay and Plaster Workshop
- BD.007** Ceramics Workshop
- BD.009** Ceramics Workshop
- BD.011** Fine Arts Worksites
- CD.001** Master Artistic Research Classroom
- CD.002** Master ArtScience Classroom
- DS.001** Coordinator Master Interior Architecture (INSIDE)
- DS.002** Classroom Master Interior Architecture (INSIDE)
- DS.101** Office Master Interior Architecture (INSIDE)



Floorplan ground floor

Floorplan ground floor

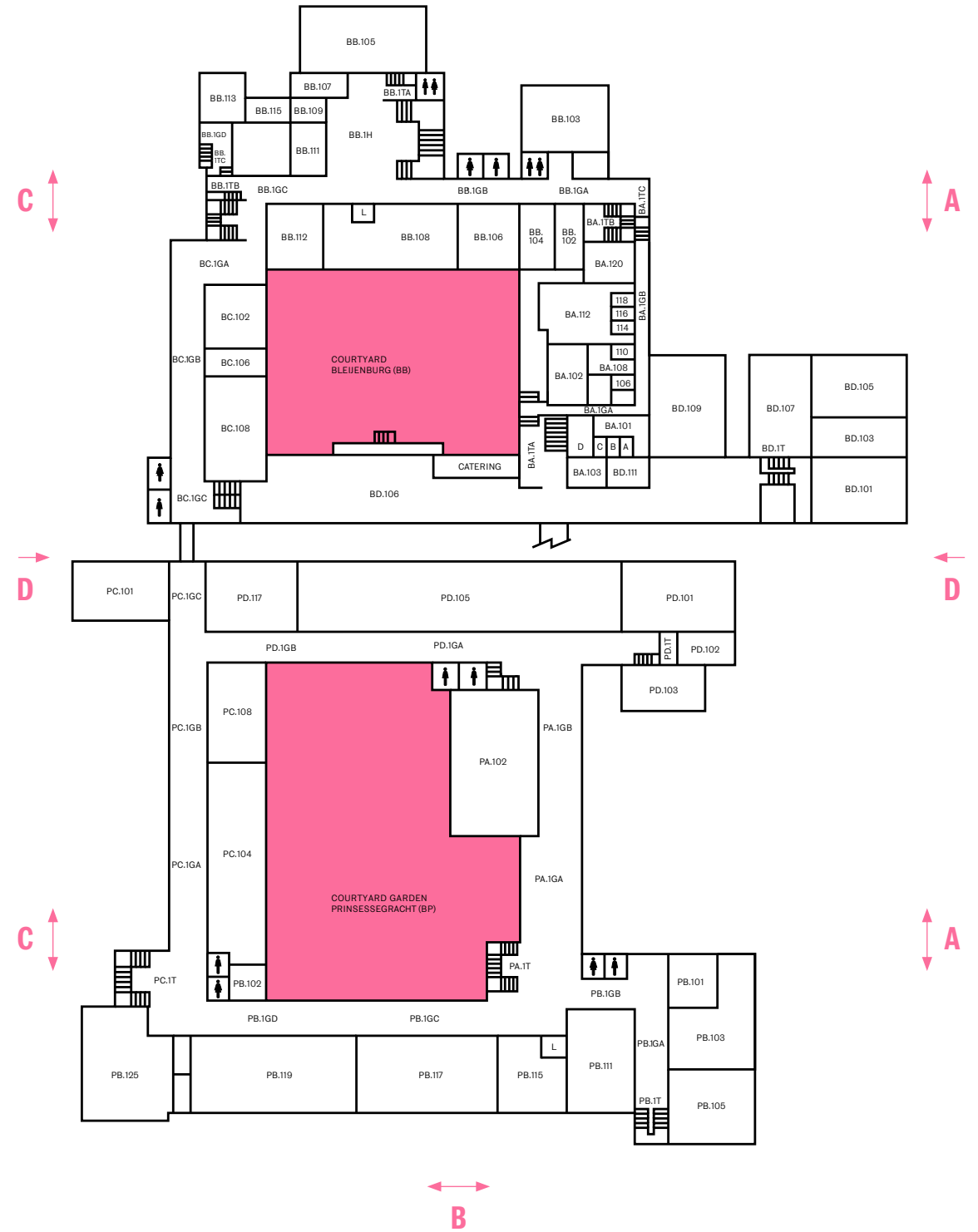
Floorplan first floor

Prinsessegracht Building

- PA.102** Photography Workshop: Large Studio
- PB.101** Photography Rental
- PB.103** Photography Workshop: Black Studio
- PB.102** Interior Architecture Workspace
- PB.105** Photography Workshop: White Studio
- PB.111** Photography Classroom
- PB.115** Photography Printing Room
- PB.117** Fine Arts Worksites (full-time)
- PB.119** Fine Arts Worksites (full-time)
- PB.125** Practical Classroom: 2D Techniques
- PC.101** Office IA&FD
- PC.104** Furniture Design Classroom
- PC.108** Classroom
- PD.101** Photography Classroom
- PD.102** Office Photography
- PD.103** Storage Photography
- PD.105** Interior Architecture Classroom
- PD.117** Photography Classroom

Bleijenburg Building

- BA.101** Photography Workshop: Darkroom
- BA.102** Multimedia Desk
- BA.103** Consulting Room
- BA.108** Multimedia Workshop: Montage Space
- BA.110** Multimedia Workshop: Montage Space
- BA.112** Multimedia Classroom
- BA.114** Multimedia Workshop: Montage Space
- BA.116** Multimedia Workshop: Montage Space
- BA.118** Multimedia Workshop: Montage Space
- BA.120** Multimedia Workshop: Montage Space
- BB.102** Fine Arts Worksites
- BB.103** Theory Classroom
- BB.104** Office I/M/D
- BB.105** Classroom
- BB.106** Fine Arts Worksites
- BB.107** Office Master ArtScience
- BB.108** Fine Arts Worksites
- BB.109** Office Master Artistic Research
- BB.111** Interactive Media Design Classroom
- BB.112** Interactive Media Design Classroom
- BB.113** Office Lectorate
- BB.115** Office Janneke Wesseling
- BC.102** Interactive Media Design Classroom
- BC.106** IMD Storage
- BC.108** Interactive Media Design Classroom
- BD.101** Fine Arts Worksites
- BD.103** Fine Arts Worksites
- BD.105** Fine Arts Worksites
- BD.106** Canteen
- BD.107** Fine Arts Worksites
- BD.109** Presentation Space
- BD.111** Consulting Room



Floorplan second + third floor

Prinsessegracht Building

Second floor

- PB.201** Fine Arts Worksites
- PB.203** ArtScience Classroom
- PB.205** ArtScience Office
- PB.207** Fine Arts Worksites
- PB.209** Fine Arts Worksites
- PB.211** Fine Arts Worksites
- PB.213** Fine Arts Worksites
- PB.217** Fine Arts Worksites
- PB.225** SYT Classroom
- PC.202** Graphic Design Classroom
- PC.212** Graphic Design Classroom
- PD.201** Graphic Design Classroom
- PD.202** Graphic Design Classroom
- PD.208** Academic Staff: Head of Graphic Design
- PD.210** Graphic Design Classroom

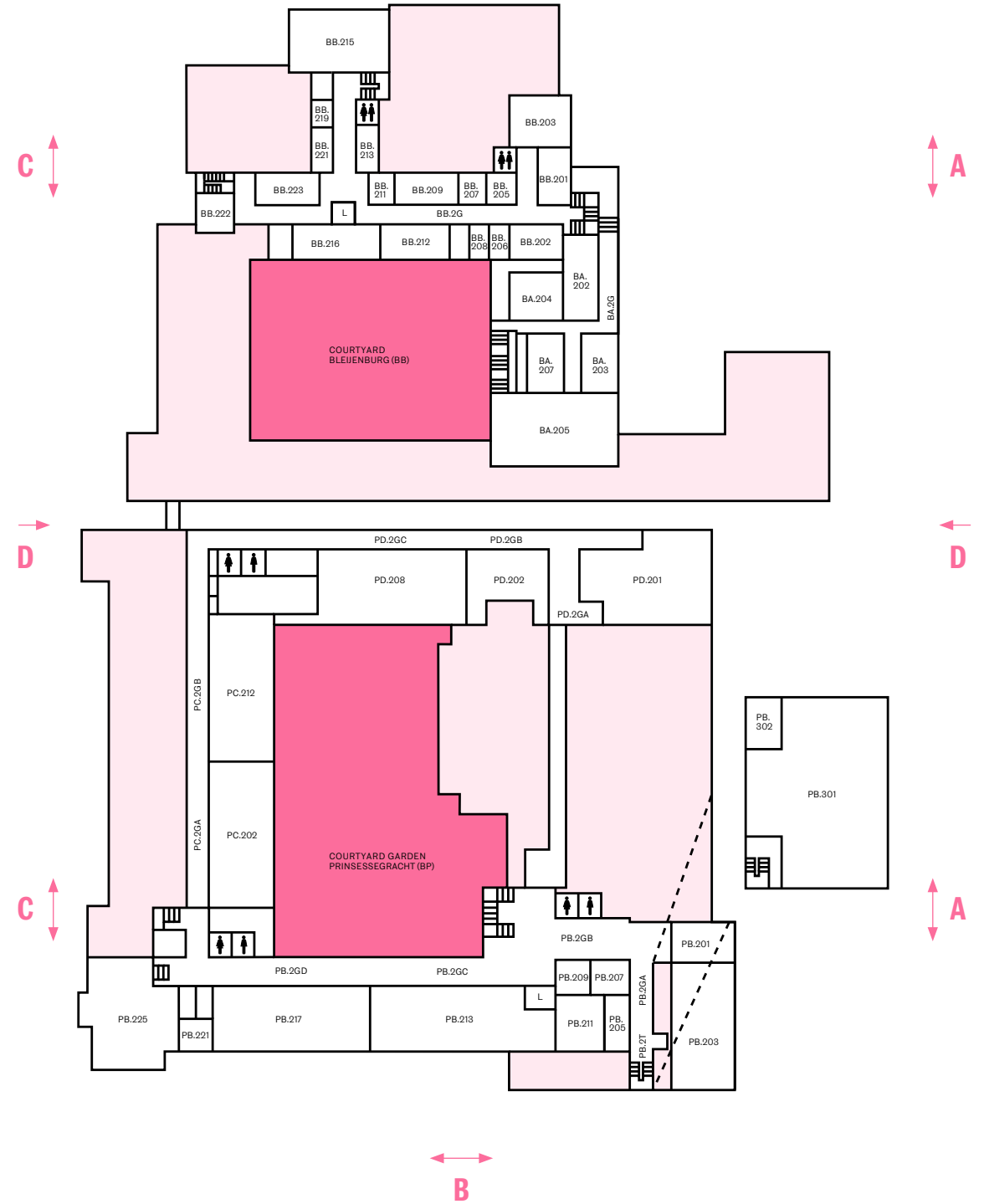
Third floor

- PB.301** Interfaculty ArtScience
- PB.302** Storage Space

Bleijenburg Building

Second floor

- BA.202** Graphics Workshop: High Pressure
- BA.203** Graphics Workshop: Screen-printing Rinsing Room
- BA.204** Cinema
- BA.205** Graphics Workshop: Screen-printing
- BA.207** Graphics Workshop: Screen-printing Illumination Room
- BB.201** Fine Arts Worksites
- BB.202** Conference Room
- BB.203** Fine Arts Worksites
- BB.205** Conference Room
- BB.206** Conference Room
- BB.208** Conference Room
- BB.209** Conference Room
- BB.211** Academic Staff Workshops
- BB.212** Theory Classroom
- BB.213** Office: Head of Finances of Hogeschool
- BB.215** College Room
- BB.216** Theory Classroom
- BB.218** IT Office
- BB.219** Dean / Doctor
- BB.221** Board Secretary
- BB.222** Office Human Resources (Head)
- BB.223** Office Human Resources



Floorplan second + third floor

Floorplan second + third floor